

23D MAX

HIFU + Liposonic 2 in 1

- 13-Line HIFU for facial lifting
- 22-Line Liposonic for body slimming
- Three output methods: dot, line, and circle





Multi-dimensional Anti-aging Effect

Safe / Stable / Continuous



Brighten skin tone



Buttock lift



Breast enhancement



Fascia lifting



Regenerated collagen



Smooth fine lines



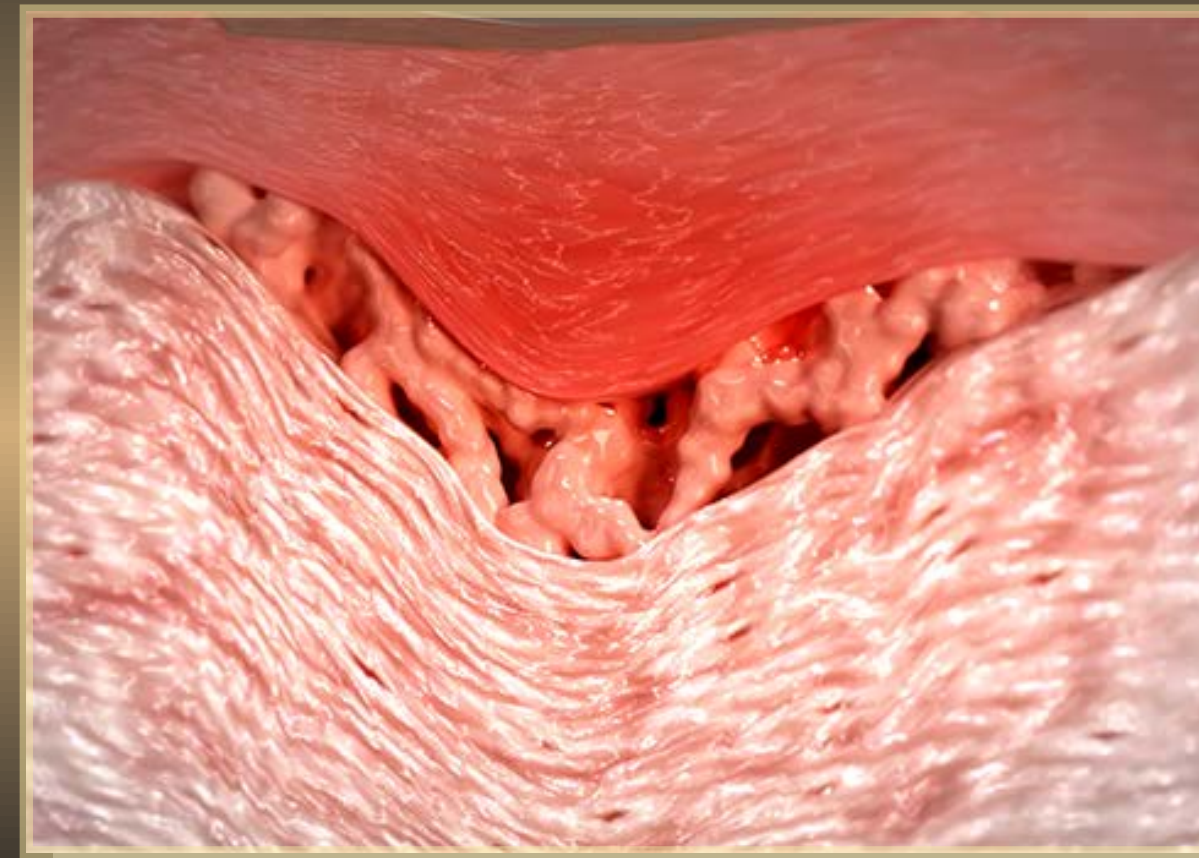
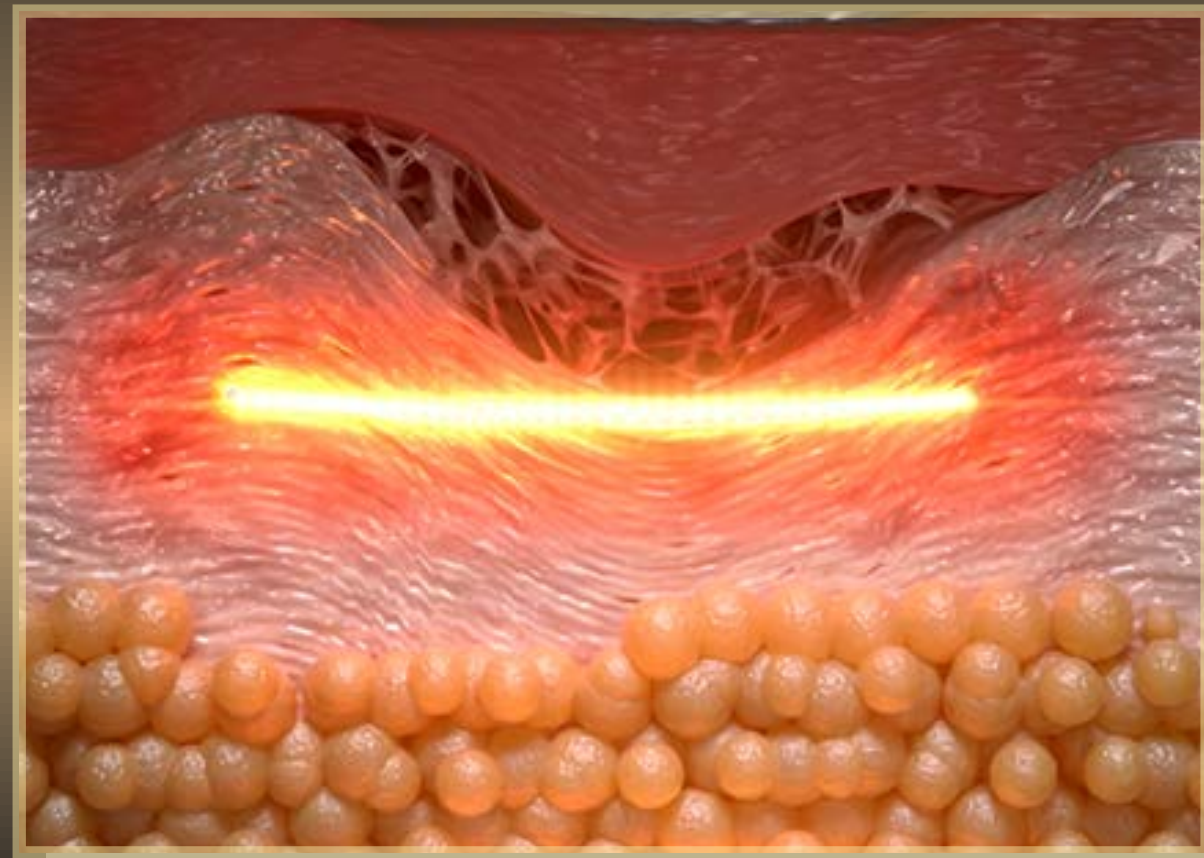
Enhance elasticity



Fat reduction

HIFU Principle

V-HIFU and P-HIFU utilize the latest patented ultra-pulse shockwave technology to generate high-energy focused ultrasound waves that quickly penetrate the epidermis and fat layer, stimulating SMAS fascia contraction and instantly raising the skin tissue temperature to 65°C, thus producing a thermal coagulation effect on the skin. This forms a network of coagulation points in the dermis and fascia layers, stimulating the contraction and tightening of fibers and collagen, promoting regeneration and repair, and achieving a layer-by-layer lifting and tightening effect.



Unique Furniture Design

13.1 inch HD smart screen

Classic large screen design

40% narrower border



13D Multi-Dimensional Handle

The 13D multi-dimensional handle can change the X and Y axis directions, quickly applying high-frequency energy to the face to achieve a firming and lifting effect.



13D Multidimensional Handpiece Cartridge Models

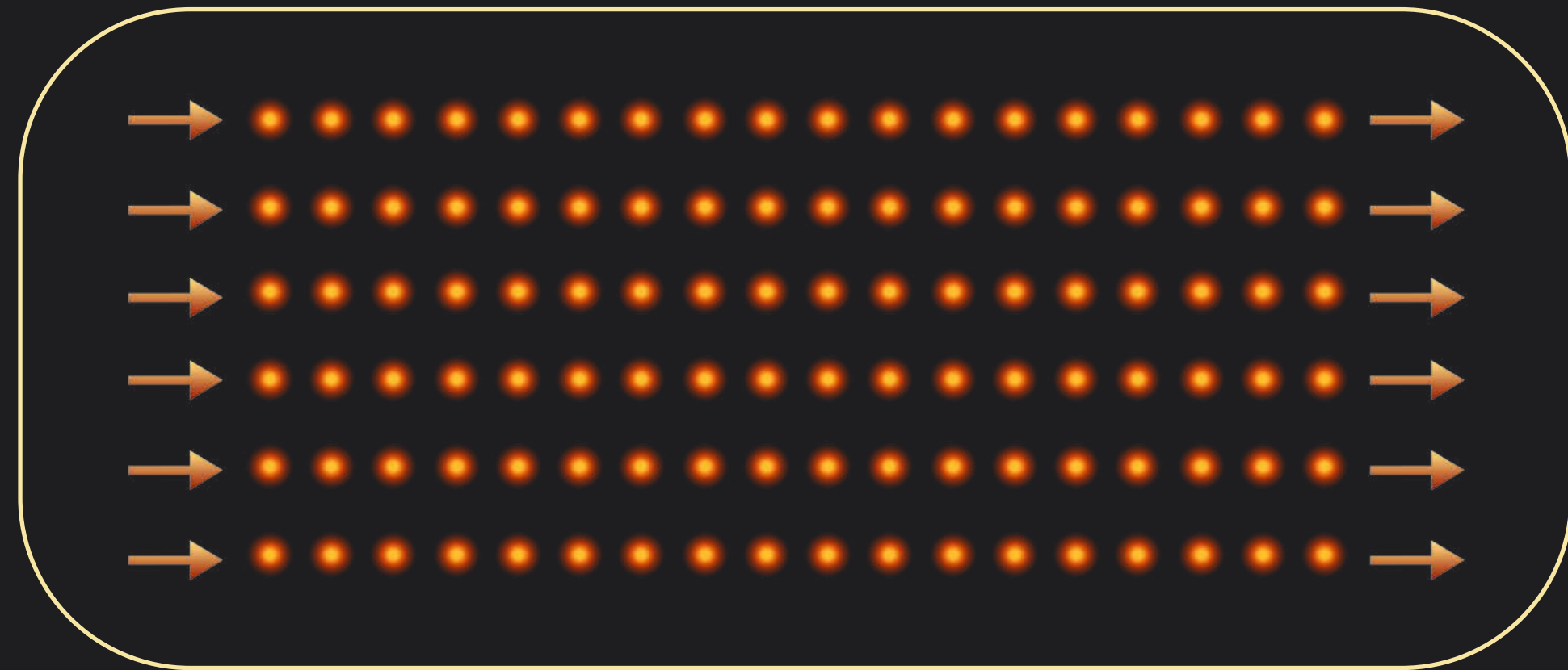
Standard: 1.5mm, 3.0mm, 4.5mm

Optional: 6.0mm, 8.0mm, 10.0mm, 13.0mm, 16.0mm, 18.0mm

Innovative Multidimensional Ultrasonic Probe Technology

Skin Care Efficiency Improved by 150%-200%

The new probe is equipped with dual high-speed brushless motors, enabling efficient and rapid output of 1 to 13 rows of ultrasonic waves with flexible column switching. It can also output in point, line, and circle patterns.



18D RS Multi-Function Handle

The 18D RS handle is equipped with dual high-speed brushless motors for efficient operation. Focused ultrasound combined with 6.78MHz radio frequency can penetrate energy from the epidermis to the fat layer simultaneously, quickly burning fat.



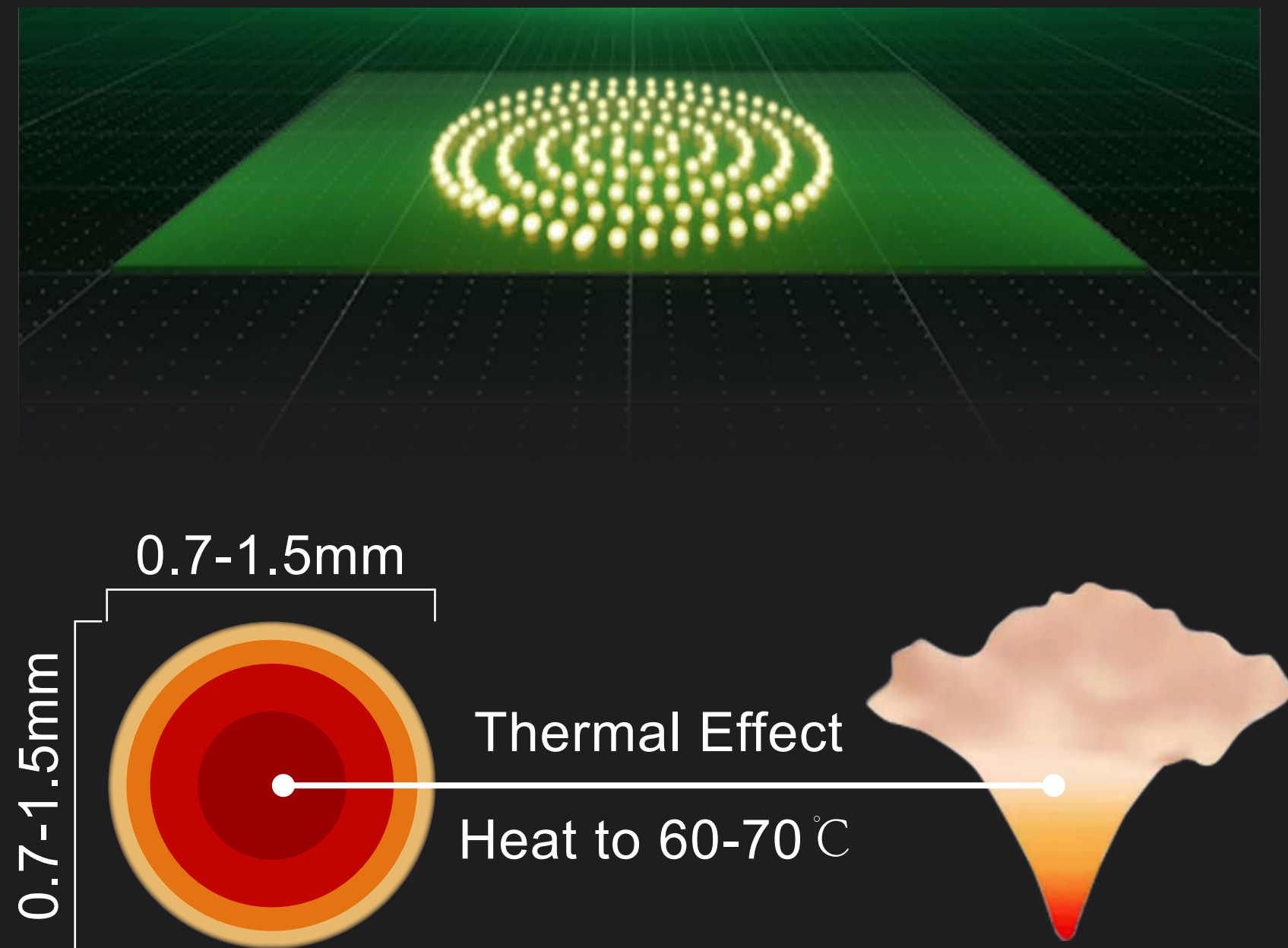
18D RS Multi-Dim handle Matching probe model

Standard : 8.0mm 13.0mm

Optional : 6.0mm 10.0mm 16.0mm 18.0mm

Spiral RF Wave Technology

New AI Spiral Work Output Mode



Thermal solidification point of MFUS



Spiral RF Wave Technology Principle

- This device employs the latest spiral radio frequency technology, integrating 6.78MHz spiral sine wave radio frequency technology to deliver radio frequency energy from the epidermis to the fat layer in a positive and negative spiral pattern.
- Simultaneously, it utilizes hollow beam acoustic wave technology to emit and transmit countless high-intensity thermal energy waves in a dot matrix pattern. It emits high-energy matrix molecular energy waves vibrating millions of times per second at 4MHz and 2MHz frequencies, penetrating deep into the subcutaneous tissue. All energy converges into a single beam point, repairing at a depth of 6-13mm, strongly acting on the skin tissue and generating an electric field focusing effect.
- Its main function is to open the channels for nutrient absorption and toxin removal in the skin, and to remove the barrier between the epidermis and fat layer, allowing for rapid fat metabolism and absorption, promoting metabolism, thereby achieving firming, slimming, and shaping effects.

18D RS Fat Loss Process



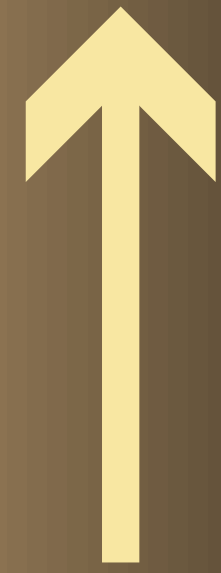
High-frequency ultrasound can selectively break down fat outside the body.



Allow the damaged fat cells to metabolize naturally in the body.



The amount of fat has been reduced and the average size has been reduced by one size.



The effect of 23D MAX

+120%

1

Anti-aging, lock age, freeze age

2

Non-invasive and non-irritating weight loss

3

Customized body beauty program

4

Targeted body shaping

5

Lifting/improvement/shaping/firming

Dual High Speed Brushless Motors

High precision : multiple built-in position sensors ensure accurate positioning.
Comprehensively improve work speed and operational efficiency.

20000Hz

The frequency reaches

1600

RPM Over

13D Multi-Dim Handle

Point mode : Flexible switching and arrangement of outputs 1 to 13 rows

150%-200%



Skin Care Efficiency Increases

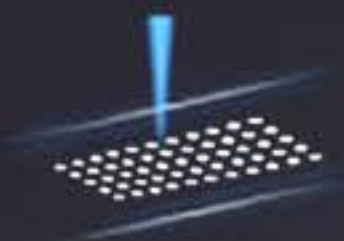
FS = 2MHz + 8.0%

Chip

FS = 4MHz + 3.8%

Frequency

13 Row



POINT



13D Multi-Dim Handle

MP mode : Make line and surface operations more user-friendly

155%-190%



Skin Care Efficiency Increases

FS = 2MHz +8.0%

Chip

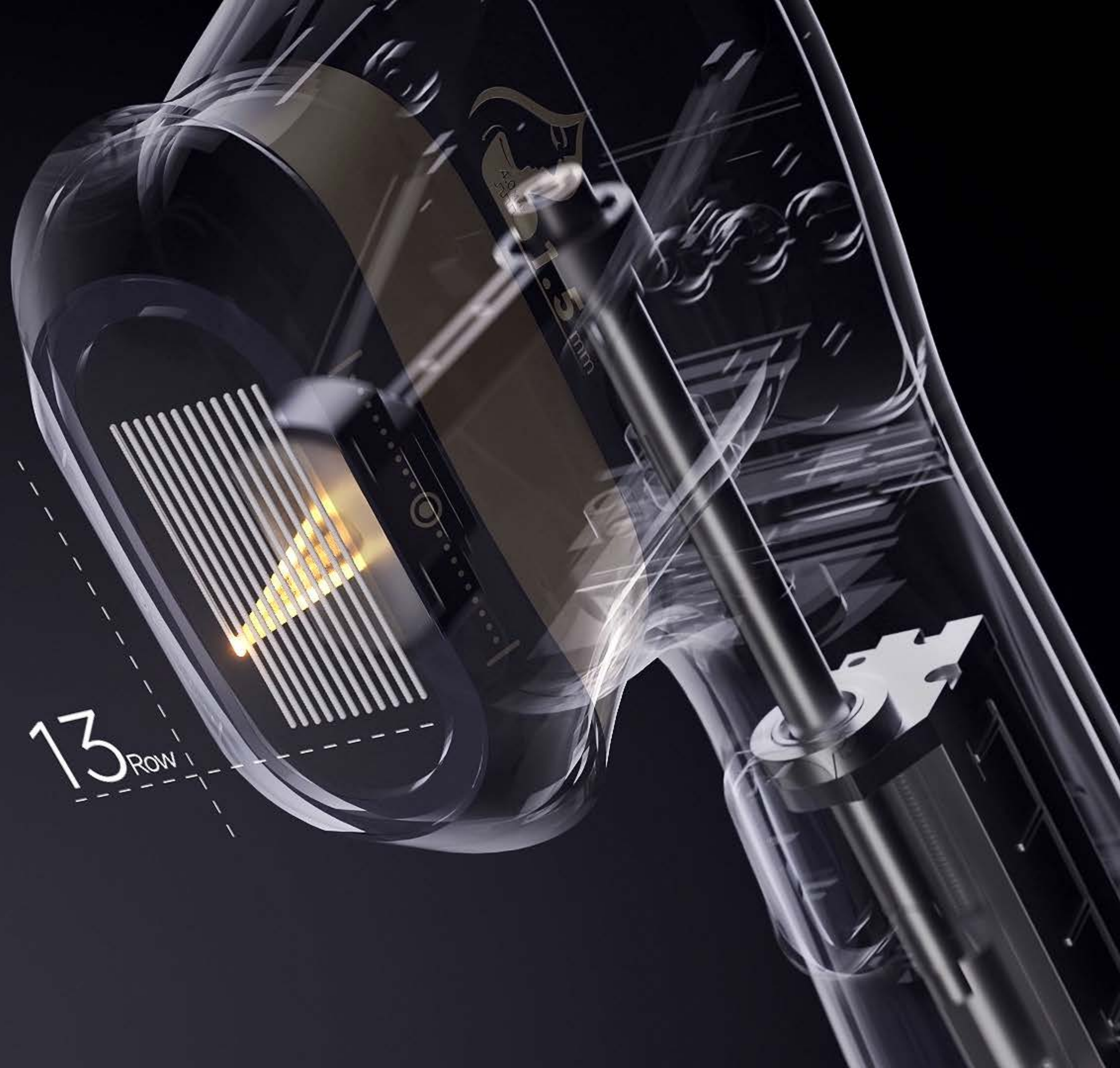
FS = 4MHz +3.8%

Frequency

13 ROW



MP



18D RS Multi-Dim Handle

Point mode : Flexible switching and arrangement of outputs 2 to 22 rows

Point Model

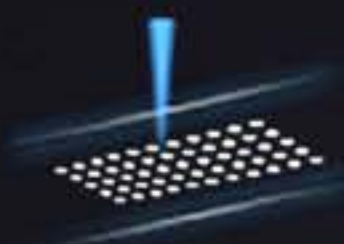
FS = 2MHz +8.0%

Chip

FS = 4MHz +3.8%

Frequency

RF Energy: 6.78MHz



POINT



18D RS Multi-Dim Handle

MP mode : The energy action area reaches a large scale of 40MM*50MM

MP Model

FS = 2MHz +8.0%	Chip
FS = 4MHz +3.8%	Frequency

RF Energy: 6.78MHz



MP

18D RS Multi-Dim Handle

Spiral mode : The spiral energy reaches
6 circles to break down fat layer by layer

Circular Model

FS = 2MHz +8.0%	Chip
FS = 4MHz +3.8%	Frequency

RF Energy: 6.78MHz



Circular

Facial Treatment : Face lifting and skin tightening

1.5_{mm}

Epidermal layer



3.0_{mm}

Dermis



4.5_{mm}

Fascia, muscle layer



Abdominal care : Reshape your body



8.0mm
Back



13.0mm
Abdomen



Buttocks Care : Reshape your body



16.0mm
Hip region



18.0mm
Hip region



Thigh Care: Reshape your body



6.0mm
Arm region



10.0mm
Thigh, calf



Before & After

Don't be afraid of the years, beautiful as first seen!





Specifications

Product Name

23D MAX

Voltage

AC 220V

Power

1280W

Frequency

2MHz 4MHz

Instrument Weight

10kg

Package Size

52*56*48 cm