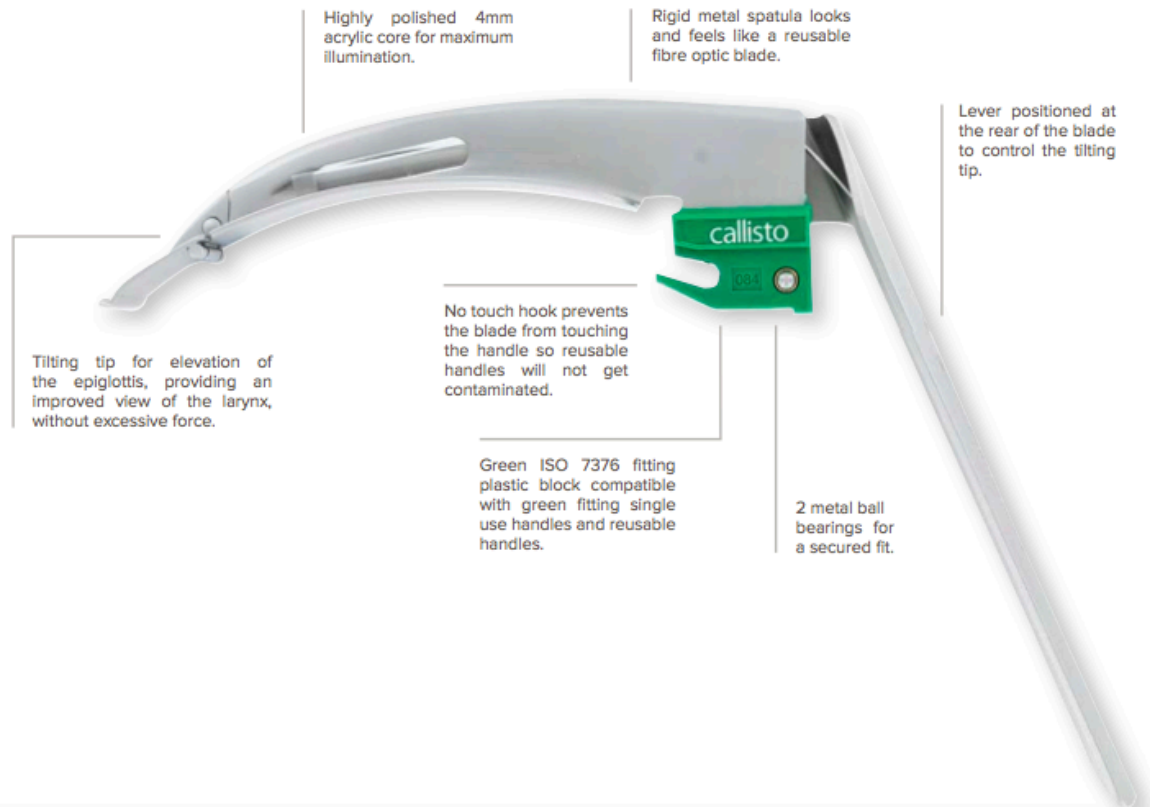


eclipse blades **callisto** ECLIPSE TIMESCO™

Callisto Eclipse blades have a lever and a tilting tip to assist with difficult intubations. The tip elevates the epiglottis with minimal force and reduces the possibility of damage to teeth.



CE marked



Single Use



Latex Free



ISO 7376
compatible



Supplied with
comprehensive
instructions



Compatible
reusable & single
use handles are
colour coded

eclipse blades



DS.3940.175.25 | CALLISTO ECLIPSE BLADE NO.4

A

- Large Adult (No.4)
- 150 (L) x 17.6mm (H)
- Box of 10



DS.3940.175.20 | CALLISTO ECLIPSE BLADE NO.3

B

- Adult (No.3)
- 130 (L) x 17.5mm (H)
- Box of 10

Difficult intubation

The tilting tip on the Eclipse blades allows greater flexibility and control during many difficult intubation cases. Such as cervical spine and neck injuries, prominent upper teeth and displacement of the larynx.

Compatibility

All Callisto blades are compatible with all Timesco single use and reusable green ISO 7376 fitting handles.

reusable green fitting laryngoscope handles

Timesco XLED laryngoscope handles have a replaceable, super bright LED bulb to provide superb illumination with reusable and single use blades. They are fully autoclaveable and are available in Medium, Small & Stubby sizes.

Green ISO 7376 fitting compatible with green fitting reusable and single use blades.

Clear product branding with the product code and CE located on the other side. The LOT number is also shown on the top of the handle.

Fully autoclaveable metal handle, covered by a 5 year guarantee or 4,000 autoclaves, whichever is sooner. See website for full terms and conditions.



Super-bright replaceable LED bulb provides excellent, white illumination with a LUX output of 123,000. It provides 5,000 hours of use and a colour temperature of 5,300(k).

A polished metal collar reflects and directs light up towards the fibre core of the blade for maximum illumination.

Knurled handle design provides excellent grip.

Secure screw cap for easy access for batteries. They can be powered by dry cell batteries or easily converted to a rechargeable handle by using the Timesco R Lithium Engines.



CE marked



Fully autoclaveable



Latex Free



Extensive guarantees



ISO 7376 compliant



Supplied with multilingual instructions



Compatible fibre optic laryngoscope blades are colour coded

xled handles



A

3000.500.10 | XLED HANDLE, MEDIUM

- Medium C
- Requires 2 x C batteries
- 146 (H), 29mm (Ø)

A

3000.950.20 | SPARE BULBS

- Suitable for XLED handles
- Pack of 6



B

3000.500.05 | XLED HANDLE, SMALL

- Small AA
- Requires 2 x AA batteries
- 146 (H) x 19mm (Ø)

B



C

3000.508.10 | XLED HANDLE, STUBBY

- Stubby AA
- Requires 2 x AA batteries
- 111 (H) x 32mm (Ø)

C

Compatibility

The XLED handles are compatible with all Timesco single use and reusable green ISO 7376 fitting blades.

Rechargeable

Timesco offers rechargeable lithium batteries (sold separately) that can be used in reusable handles to convert it to a rechargeable system.

Contact us for more information.