

Quality Compliance

Quality System

EN ISO 13485 - Quality Management System
(Medical Devices)

EN ISO 9001 - Quality Management Systems

EN ISO 14001 - Environmental Management Systems

EN ISO 45001 - OH&S Management Systems

Pressure Vessels Construction

2014/68/EU (Module B+D+D1) - Pressure Equipment Directive

EN 13445 - Unfired Pressure Vessels

EN 14222 - Stainless Steel Shell Boilers

EMC, LVD & Safety

EN 60601-1-2 - EMC Requirements for Medical Devices

EN 61326-1 - EMC Requirements for Laboratory Devices

EN 60601-1 - LVD Requirements for Medical Devices

EN 61010-1 - LVD Requirements for Laboratory Devices

EN 61010-2-40 - Safety requirements for Sterilizers

EN 60601-1-8 - Safety of Medical Electrical Equipment (Alarms)

EN 60204-1 - Safety of Machinery

EN 61000-4-3 - Immunity to RF Wireless Communications

Directive, Guidelines & Technical Standards

93/42/EEC (amended in Directive 2007/47/EC) –

Medical Devices Directive

EN 285 - Sterilization (Steam Sterilizers)

EN ISO 17665-1 - Sterilization of Healthcare Products (Validation)

2006/42/EC - Machinery Directive

2014/35/EU - Low Voltage Directive

2014/30/EU - Electromagnetic Compatibility Directive

Environmental Directives

2002/95/EC - RoHS

2011/65/EU - RoHSII

2002/96/EC - WEEE

Other

EN 62304 - Medical Device Software

EN ISO 14971 - Risk Management of Medical Devices

EN 60601-1-6 - Usability of Medical Devices

EN 15223-1 - Symbols Used in Medical Devices

EN 1041 - Information Supplied for Medical Devices

EN 62366-1 - Application of Usability

IEC 60529 - Degrees of Protection Provided by Enclosures (IPX4)

Wide Selection of Optional Features & Accessories

It is possible to add one of many options & accessories from which some are listed below to your steam sterilizer.

- Auto-blowdown for Generator / Desalination
- Degassing System
- 10" Videographic Touchscreen
- GSM Connection Module
- Barcode Reader
- Dual Channel Chart Recorder
- Dual Steam Generation
- Fixed & Adjustable Height Transport Trolley
- Loading Trolley / Shelf System
- Automatic Loader / Unloader
- Complete RO System
- Silent Air Compressor



PLUSTEAM SERIES STEAM STERILIZERS

MODEL	REFERENCE NO	DIMENSIONS (W x D x H)	CAPACITY (L)	CAPACITY (STU)	DOOR FORMATION
PLUSTEAM 1S	511001	390 x 670 x 390 mm.	102	1	SINGLE MANUAL SLIDING
	511023	390 x 670 x 390 mm.	102	1	SINGLE AUTOMATIC SLIDING
	511027	390 x 670 x 390 mm.	102	1	SINGLE HINGED
	511012	390 x 790 x 390 mm.	120	1	DOUBLE MANUAL SLIDING
	511025	390 x 790 x 390 mm.	120	1	DOUBLE AUTOMATIC SLIDING
PLUSTEAM 1M	511038	390 x 790 x 390 mm.	120	1	DOUBLE HINGED DOORS
	511002	390 x 1050 x 390 mm.	160	1,5	SINGLE MANUAL SLIDING
	511024	390 x 1050 x 390 mm.	160	1,5	SINGLE AUTOMATIC SLIDING
	511028	390 x 1050 x 390 mm.	160	1,5	SINGLE HINGED
	511013	390 x 1050 x 390 mm.	160	1,5	DOUBLE MANUAL SLIDING
PLUSTEAM 1L	511026	390 x 1050 x 390 mm.	160	1,5	DOUBLE AUTOMATIC SLIDING
	511039	390 x 1050 x 390 mm.	160	1,5	DOUBLE HINGED
	511003	500 x 840 x 500 mm.	210	1,5	SINGLE AUTOMATIC SLIDING
	511049	500 x 840 x 500 mm.	210	1,5	SINGLE MANUAL SLIDING
	511029	500 x 840 x 500 mm.	210	1,5	DOUBLE HINGED
PLUSTEAM 1XL	511014	500 x 840 x 500 mm.	210	1,5	DOUBLE AUTOMATIC SLIDING
	511050	500 x 840 x 500 mm.	210	1,5	DOUBLE MANUAL SLIDING
	511040	500 x 840 x 500 mm.	210	1,5	DOUBLE HINGED
	511004	500 x 1000 x 500 mm.	250	1,5	SINGLE AUTOMATIC SLIDING
	511030	500 x 1000 x 500 mm.	250	1,5	SINGLE HINGED
PLUSTEAM 2	511015	500 x 1000 x 500 mm.	250	1,5	DOUBLE AUTOMATIC SLIDING
	511041	500 x 1000 x 500 mm.	250	1,5	DOUBLE HINGED
	511005	500 x 1300 x 500 mm.	325	2	SINGLE AUTOMATIC SLIDING
PLUSTEAM 4	511031	500 x 1300 x 500 mm.	325	2	SINGLE HINGED
	511016	500 x 1300 x 500 mm.	325	2	DOUBLE AUTOMATIC SLIDING
	511042	500 x 1300 x 500 mm.	325	2	DOUBLE HINGED
PLUSTEAM 6	511006	670 x 840 x 670 mm.	377	4	SINGLE AUTOMATIC SLIDING
	511032	670 x 840 x 670 mm.	377	4	SINGLE HINGED
	511017	670 x 840 x 670 mm.	377	4	DOUBLE AUTOMATIC SLIDING
PLUSTEAM 8	511043	670 x 840 x 670 mm.	377	4	DOUBLE HINGED
	511007	670 x 1003 x 670 mm.	450	6	SINGLE AUTOMATIC SLIDING
	511033	670 x 1003 x 670 mm.	450	6	SINGLE HINGED
PLUSTEAM 10	511018	670 x 1003 x 670 mm.	450	6	DOUBLE AUTOMATIC SLIDING
	511044	670 x 1003 x 670 mm.	450	6	DOUBLE HINGED
	511008	670 x 1300 x 670 mm.	584	8	SINGLE AUTOMATIC SLIDING
PLUSTEAM 12	511034	670 x 1300 x 670 mm.	584	8	SINGLE HINGED
	511019	670 x 1300 x 670 mm.	584	8	DOUBLE AUTOMATIC SLIDING
	511045	670 x 1300 x 670 mm.	584	8	DOUBLE HINGED
PLUSTEAM 14	511009	670 x 1600 x 670 mm.	718	10	SINGLE AUTOMATIC SLIDING
	511035	670 x 1600 x 670 mm.	718	10	SINGLE HINGED
	511020	670 x 1600 x 670 mm.	718	10	DOUBLE AUTOMATIC SLIDING
PLUSTEAM 1S	511046	670 x 1600 x 670 mm.	718	10	DOUBLE HINGED
	511010	670 x 1900 x 670 mm.	853	12	SINGLE AUTOMATIC SLIDING
	511036	670 x 1900 x 670 mm.	853	12	SINGLE HINGED
PLUSTEAM 1M	511021	670 x 1900 x 670 mm.	853	12	DOUBLE AUTOMATIC SLIDING
	511047	670 x 1900 x 670 mm.	853	12	DOUBLE HINGED
	511011	670 x 2200 x 670 mm.	988	14	SINGLE AUTOMATIC SLIDING
PLUSTEAM 1L	511037	670 x 2200 x 670 mm.	988	14	SINGLE HINGED
	511022	670 x 2200 x 670 mm.	988	14	DOUBLE AUTOMATIC SLIDING
	511048	670 x 2200 x 670 mm.	988	14	DOUBLE HINGED

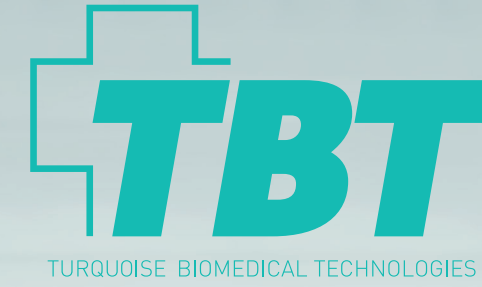
Our models and their specifications are given below:

* Decimal chamber volumes are rounded up to next integer value.



TURKIJAZ BIYOMEDİKAL TEKNOLOJİLER VE SAĞLIK HİZMETLERİ SAN. TIC. LTD. STİ.
Kazım Özalp Mah. Hafta Sok. No:23/2 06610 Çankaya / ANKARA / TURKEY
Tel: +90 850 840 8 828 Fax: +90 312 911 25 28 info@tbtmedical.com www.tbtmedical.com

This document is intended for the use of partners of TURKIJAZ BIYOMEDİKAL TEKNOLOJİLERİ İNŞ. REPRODUCTION IN WHOLE OR IN PART BY ANY OTHER PARTY IS PROHIBITED. TBT SPECIFICATIONS ARE GIVEN FOR REFERENCE ONLY AND ARE SUBJECT TO CHANGE WITHOUT ANY PREVIOUS NOTICE. ACCESSORY/PRODUCT IMAGES ARE FOR ILLUSTRATIVE PURPOSES ONLY. REV. EN 00002-2021 © 2015, TBT İNŞ. ALL RIGHTS RESERVED.



Manufactures Happiness! :-)

PLUSTEAM

Steam Sterilizers for Medical and Laboratory Use

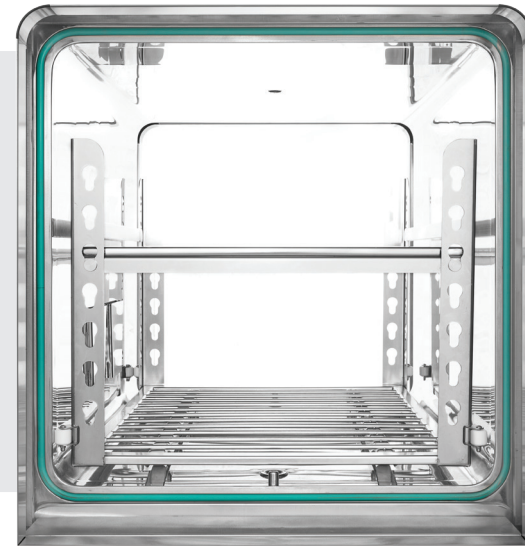
www.tbtmedical.com

+ Robust Design for Continuous Workflow

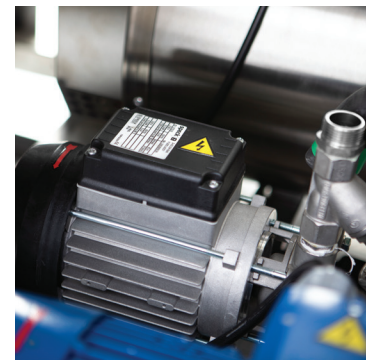
PLUSTEAM series steam sterilizers are designed to combine stability with functionality. Proper sterilization keeps key operations and facilities running. In R.U.M.E.D. (Reprocessing Unit for Medical Devices) 100% success ratio at robustness is not a luxury but an obligation, where we based our design principles. We keep in mind your needs for a fast, robust and user-friendly sterilizer while combining it with service engineers' needs for simple & smooth design and administrative unit's all time efforts for getting all these features within an affordable budget.



Smooth panels for increased cleaning on surfaces



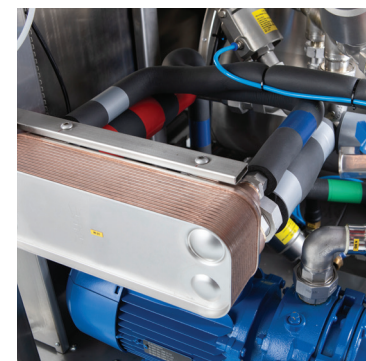
0,1 Ra polished chamber



Durability & performance in all details



AISI 304 & AISI 316 piping design with connections & components

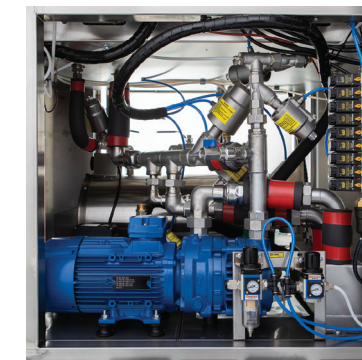


Multi-colour coded piping with isolation

+ Quality in Every Detail

PLUSTEAM series of steam sterilizers are delivered as a complete unit with components carefully chosen from Worldwide well-known brands. Chamber, jacket and generator are made of AISI 316 L quality stainless steel, while doors are from a combination of AISI 304 & AISI 316 L stainless steel for increased stability. All components are placed on a frame and dripping plate, both made of AISI 304. Isolation used to cover piping improves safety and ensures economy by reducing energy loss.

- Double stage, silent vacuum pump
- Feeder pump with mechanical seal
- Dual water connection
- AISI 316 stainless steel check valves
- AISI 304 stainless steel pneumatic valves
- Generator with 5 level safety system



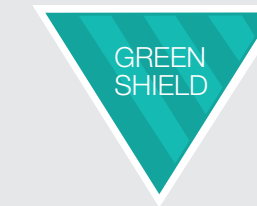
Fast and energy saving cycles with dual stage silent vacuum pump



TUV certified fixed type safety valves



Functional design in accessories



Green Shield PACS

Traditional sterilizers consume vast amount of water & electricity during vacuum generation and drain cooling. Green Shield provides environmentally-friendly solutions while reducing your operational costs.

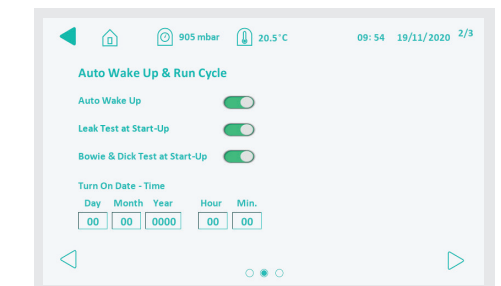
- Heat radiation recovering piping design
- Standby function & sleep mode
- Intelligent heating elements control
- Aqua EQ Heat Exchanger & Particle Assisted Cooling System (PACS) for minimized drain water saving
- Chrono Chill Recirculation System (CCR) for overall water usage

+ Easy & Effective

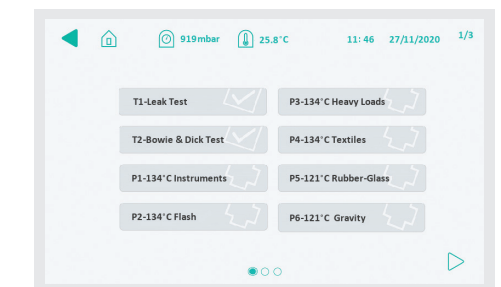
User friendly HMI, a microprocessor-controlled PLC controller through 7" Videographic Touchscreen, enables sterilization of various materials through 8 standard cycles and 100 custom cycles, where 14 of them are shortlisted for easy access. 2 test cycles (Leak Test & Bowie & Dick Test) are available.

- 7" Videographic Touchscreen on both ends (for pass-through models only!)
- High accessibility via RS 232, RS 485, USB & ethernet ports
- Increased connectivity with a remote access module
- Ability to connect third party software
- 6 level password protection
- Combination of deep & pulsed drying options
- Self-diagnosis with alarm and warning messages
- Printed, audio & visual error & warning messages
- Cycle & error log
- Brightness control & adjustment

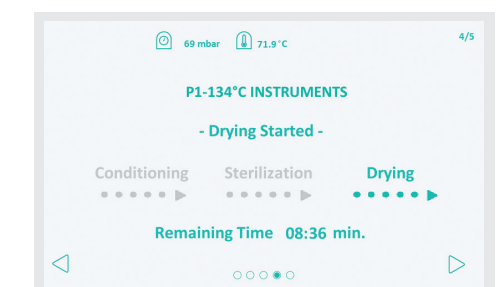
Remote service manager access & control on device via PLUSOFT Cycle & Service Manager



Auto-start function with a combination of wake up, Leak Test & Bowie & Dick/Warm-up Cycle



Iconographic cycle definitions



Easy-view function to monitor at distance