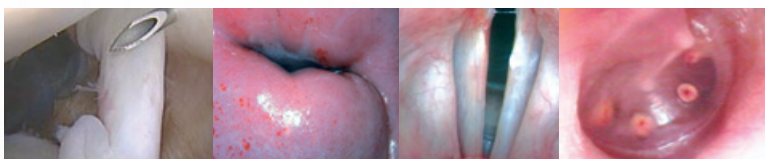


CAMERA FOR ENDOSCOPY

OP-2000 HD

HIGH DEFINITION FOR PROFESSIONALS

- Full HD 1920 x 1080
- Automatic Exposure
- 3 Programmable Settings



The OP-2000 HD camera provides sharp and crisp images with an excellent Full HD video quality. Its intuitive interface and ergonomic camera head ensure an optimal work comfort during diagnostic and surgical procedures, where a flawless performance is essential.

“Our best image will enhance your work’s precision”

HDMI Output

Connection to a monitor or capture system.

FREEZE

Temporarily freezes the image on the monitor for analysis.

ZOOM

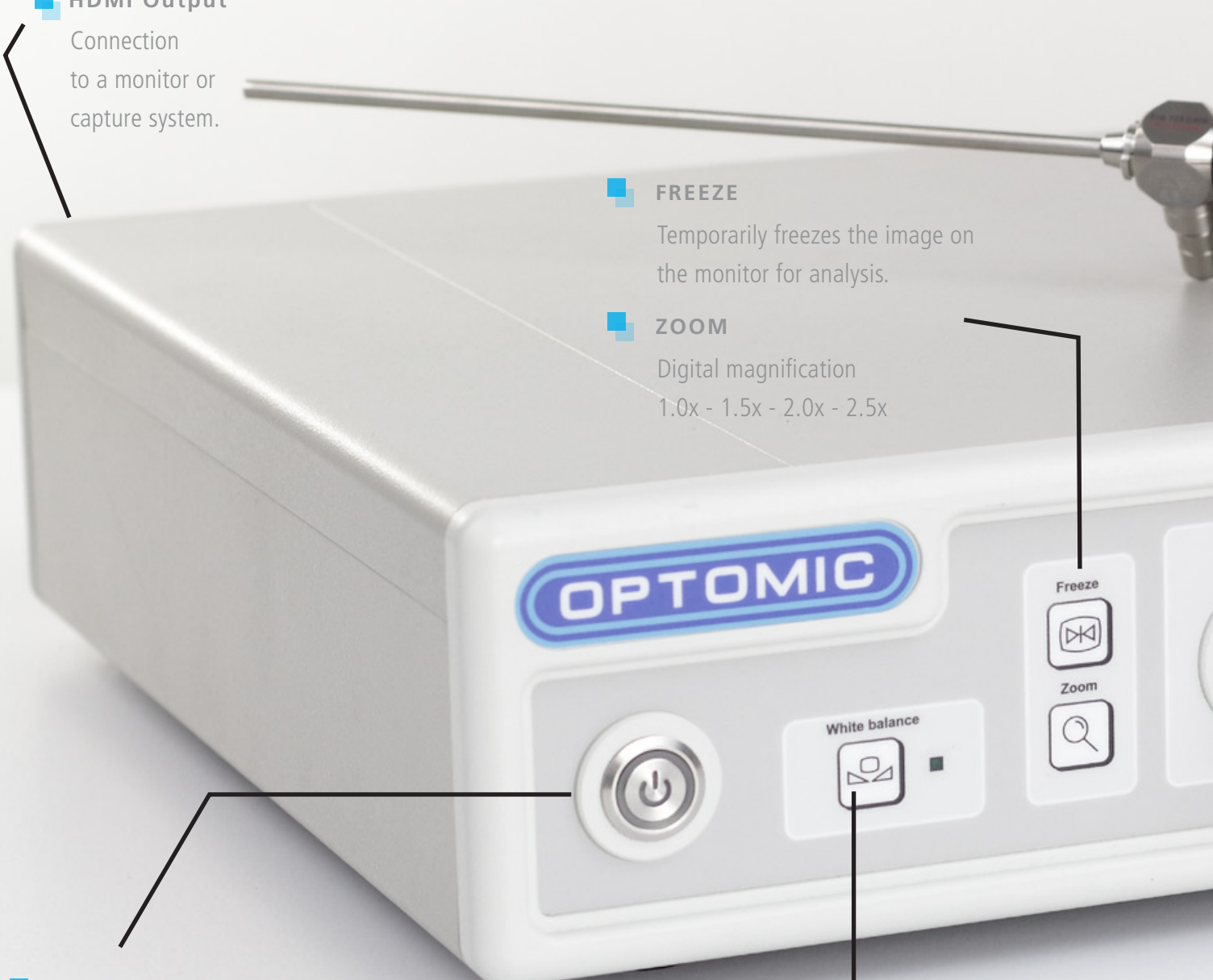
Digital magnification
1.0x - 1.5x - 2.0x - 2.5x

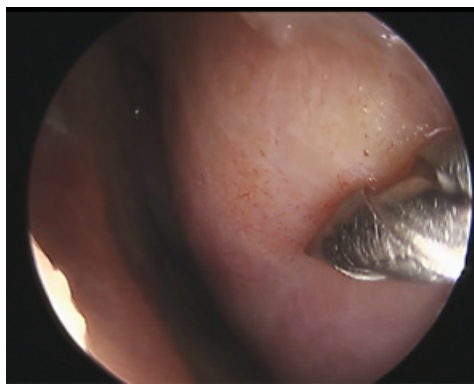
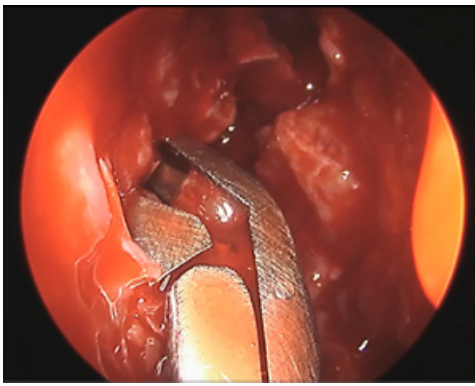
STAND BY-ON/OFF

With light indication.

WHITE BALANCE

Automatic white balance for accurate color correction.





Images recorded with the OP-2000 HD during surgery and diagnostic sessions



FOCUSING RING
Includes an universal endo coupler and adjustment of focal distance.

CAMERA HEAD
1/3" Full HD CMOS with 1080/50i.
2 Programmable buttons for zoom, freeze or white balance.

CONNECTOR PORT
Push Pull connector for safe and quick connecting.

BRIGHTNESS
Adjustment for image brightness.

SHARPNESS
Adjustment for image sharpness.

MENU "Push & Turn"
Quick and intuitive setting control to adjust settings and program profiles

PROFILE
Preset settings for Rigid endoscope, Flexible endoscope or microscope / colposcope.



SPECIFICATIONS

IMAGE SENSOR	1/3" Full HD MOS
VIDEO FORMAT	1080/50i
RESOLUTION	1920x1080 pixels
VIDEO OUTPUT	HDMI x1
MINIMUM LIGHT SENSITIVITY	1lux
WHITE BALANCE	Automatic and manual
SHUTTER SPEED	1/10.000 // 59,94Hz
SHUTTER MODE	PEAK / AVERAGE & AREA control
GAIN	Automatic (AGC)
SCENE FILE	3 Pre-settings (programmable at Menu)
SHARPNESS IMAGE	Yes - Controlled by menu and front panel
FLIP/MIRROR IMAGE	Yes - Controlled by menu
FREEZE FUNCTION	Yes - Controlled by menu and front panel
ANTI-MOIRÉ FILTER	Yes - Automatic
ELECTRONIC ZOOM	1.0x - 1.5x - 2.0x - 2.5x
ON SCREEN DISPLAY	Yes
CAMERA HEAD	2 programmable buttons (Zoom, Freeze or WB functions) C-Mount coupler Non-conductive and water proof
FOCAL DISTANCE	F=18mm (optional zoom) Universal Endo Coupler for Rigid and Flexible Endoscopes
DIMENSIONS	Control Unit: 320 x 90 x 290mm Camera Head: 45 x 32 x 56mm
WEIGHT	Control Unit: 3,4Kg Camera Head: 80gr
MAINS & POWER	100-240V~ // 16VA

OPTOMIC ESPAÑA S.A.

Madroño, 4. E-28770 Colmenar Viejo, Madrid, Spain
 Tel: +34 91 804 44 44 • Fax: +34 91 803 84 14
 export@optomic.com • www.optomic.com

